

# The BARNDOMINIUM



## SLAB-ON-GRADE, BUILT TO LOCK-UP BY INTEGRITY

The Barndominium, with its country design, open concept and abundance of natural light, combines a beautiful family home with the utility of an attached working area. The residence offers over 2500 sq ft of living space featuring an open-concept living area with a large kitchen and dining area, as well as three bedrooms, 2 full bathrooms and 2 half bathrooms, mud room and laundry. The second floor boasts a large bonus area. Attached to the living space is an oversized garage or workspace that can be further customized to meet your lifestyle.

Built with our Perma-Column® Foundation, this slab-on-grade house is professionally designed and engineered. Integrity crews will build your home to the lock-up stage which includes exterior walls, roof, windows, doors and metal siding. The interior is ready for you and your contractor to take over and complete.

The Barndominium comes with an engineered drawing package, including a site plan and code analysis for permit application.

## FEATURES

- 1958 sq ft of main floor living space with an additional 560 sq ft of usable space on the second floor
- Space for 3 bedrooms, 2 full baths and 2 half bathrooms, an extra large open concept plan for a full kitchen, dining and sitting area, plus laundry and mud room
- Upper floor bonus room
- 30' x 50' attached garage or workspace
- Permit ready engineered and stamped drawings
- Warranty covering labour and materials
- Efficient build schedule of 4 - 6 weeks\*
- Flexibility - complete the interior your way

\*schedule may vary



Upgraded model shown

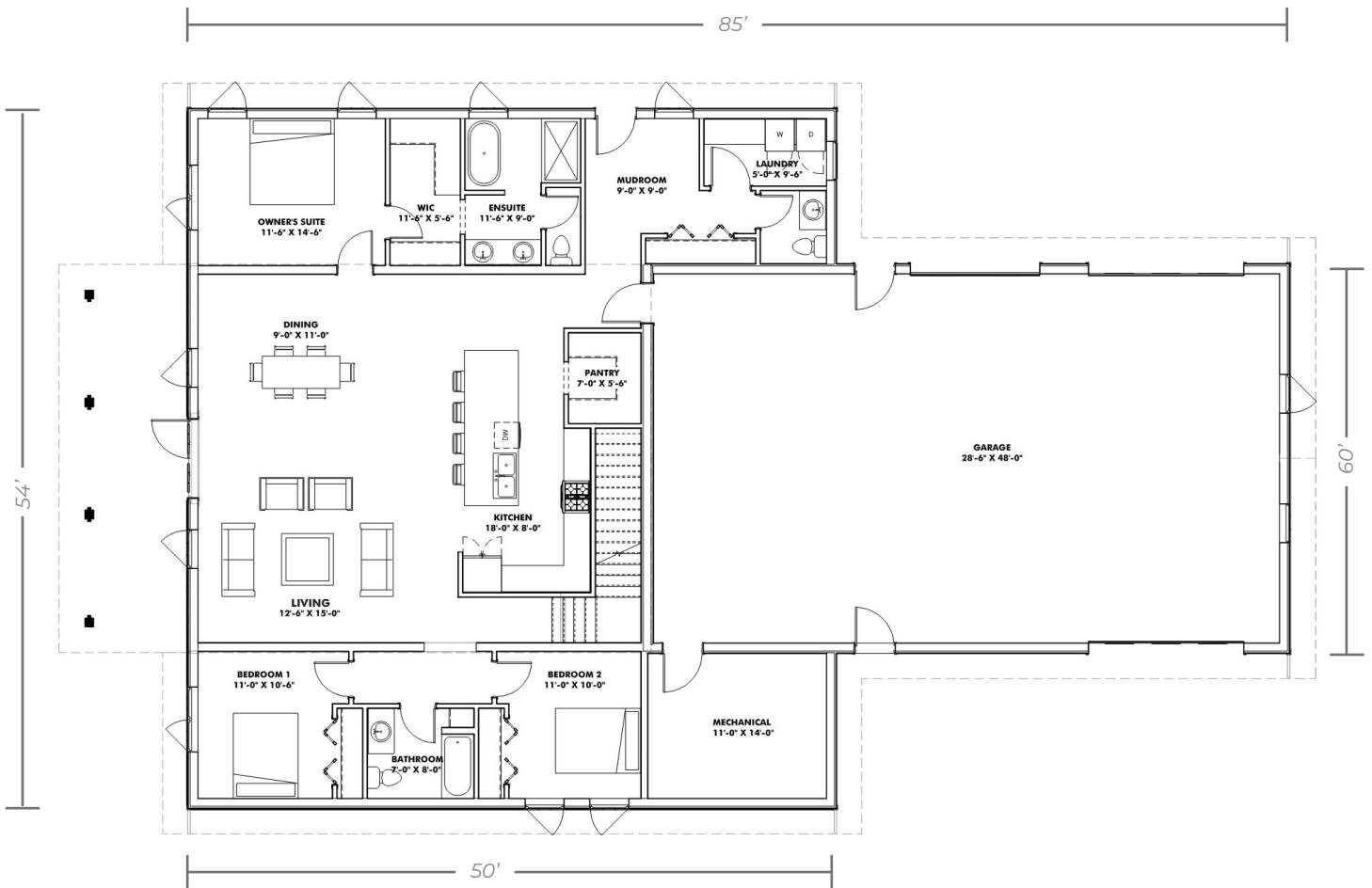


V01192024

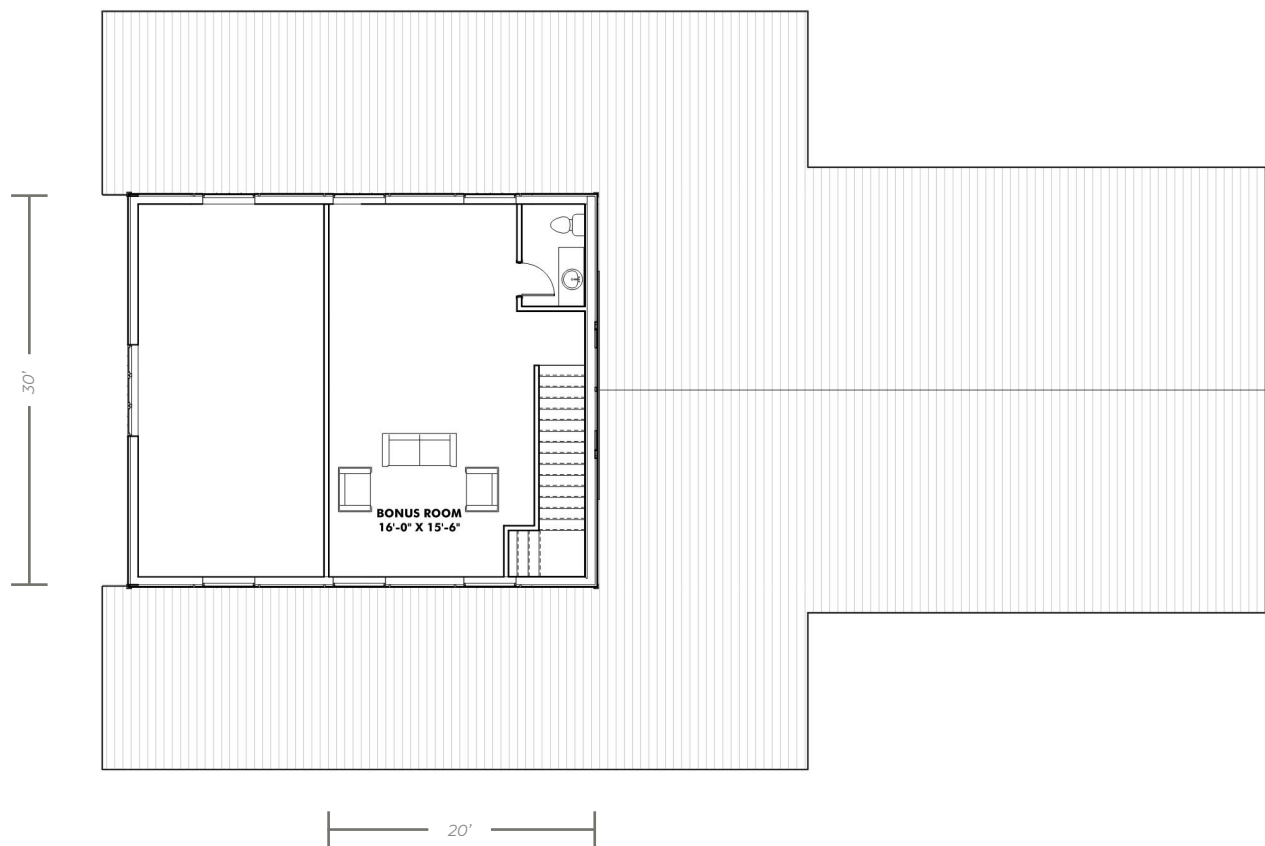
**YOUR HOME. WHEN AND WHERE YOU WANT.**

866-974-7678 | [sales@integritybuilt.com](mailto:sales@integritybuilt.com) | [integritybuilt.com](http://integritybuilt.com)

## MAIN FLOOR 1958 sq ft



## SECOND FLOOR 560 SQ FT



## BASE SPECIFICATIONS

### ■ DESIGN AND ENGINEERING

- Engineered, stamped drawings
- Complete floor plan layouts

### ■ FOUNDATION

- 5' Perma-Column® with 4 ply 2x8 laminated posts
- Frost Shield Insulation System

### ■ WINDOWS AND DOORS

- White, Vinyl, Dual Glaze, Low E Casement windows
  - 36" steel door slabs
    - ½ Glass at front entry
    - Full Glass at dining room
    - 16' x 8' Overhead doors, white, no operator (if applicable).
- \*As per standard plan designs shown

### ■ EXTERIOR WALLS

- 4 ply 2x8 Laminated posts
- 2x4 horizontal strapping (exterior of post)
- House wrap
- 29 Gauge coloured Metal

### ■ ROOF

- Engineered roof trusses
- 2x6 strapping
- 7/16" OSB sheathing
- 29 gauge coloured Metal with synthetic underlay

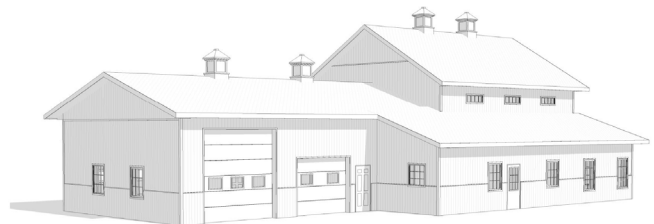
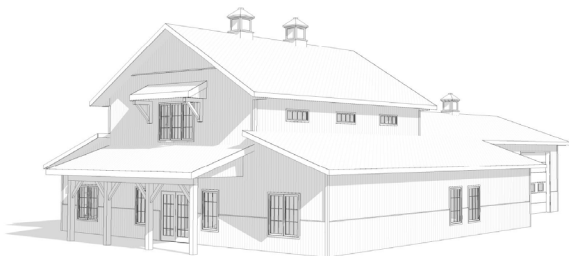
### ■ WARRANTY

- Coverage on labour and materials as follows;
- 1 year: Overhead doors and windows
  - 5 years: Defects on supplied material and labour
  - 40 years: Metal Finish
  - Lifetime: Perma-Column® Foundation

## AVAILABLE UPGRADES

- 7/16" OSB Wall Sheathing
- Board and Batten or Horizontal Plank wall metal profiles

- Wainscot metal accent
- Triple Glaze Windows
- Black Windows



**YOUR HOME. WHEN AND WHERE YOU WANT.**

866-974-7678 | [sales@integritybuilt.com](mailto:sales@integritybuilt.com) | [www.integritybuilt.com](http://www.integritybuilt.com)