

The HIGHWOOD



SLAB-ON-GRADE, BUILT TO LOCK-UP BY INTEGRITY

The Highwood is a beautiful bungalow that provides room for you and your family while maintaining affordability. With over 2100 square feet of living space, there is room for an owner's suite with walk-in closet and ensuite, 2 bedrooms, 2 bathrooms, large kitchen with walk-in pantry and dining area, great room, plus a laundry room, home office and mud room. The floor plan also includes a 2-car garage and a covered porch on both the front and rear side of the home.

Built with our Perma-Column® Foundation, this slab-on-grade house is professionally designed and engineered. Integrity crews will build your home to the lock-up stage which includes exterior walls, windows, doors, and metal roofing. The interior is ready for you and your contractor to take over and complete.

The Highwood also comes with a complete drawing package, including the floor plan for permit application.

FEATURES

- 2118 sq ft of living space and a 2-car garage
- Full-length covered porches on front and rear
- An owner's suite with walk-in-closet and ensuite, 2 bedrooms, 2 bathrooms, a home office, a large kitchen with walk-in pantry and dining area, a great room, plus a laundry room and mud room
- Permit ready engineered and stamped drawings
- Warranty covering labour and materials
- Efficient build schedule of 4 - 6 weeks*
- Flexibility - complete the interior your way

*schedule may vary



Upgraded model shown



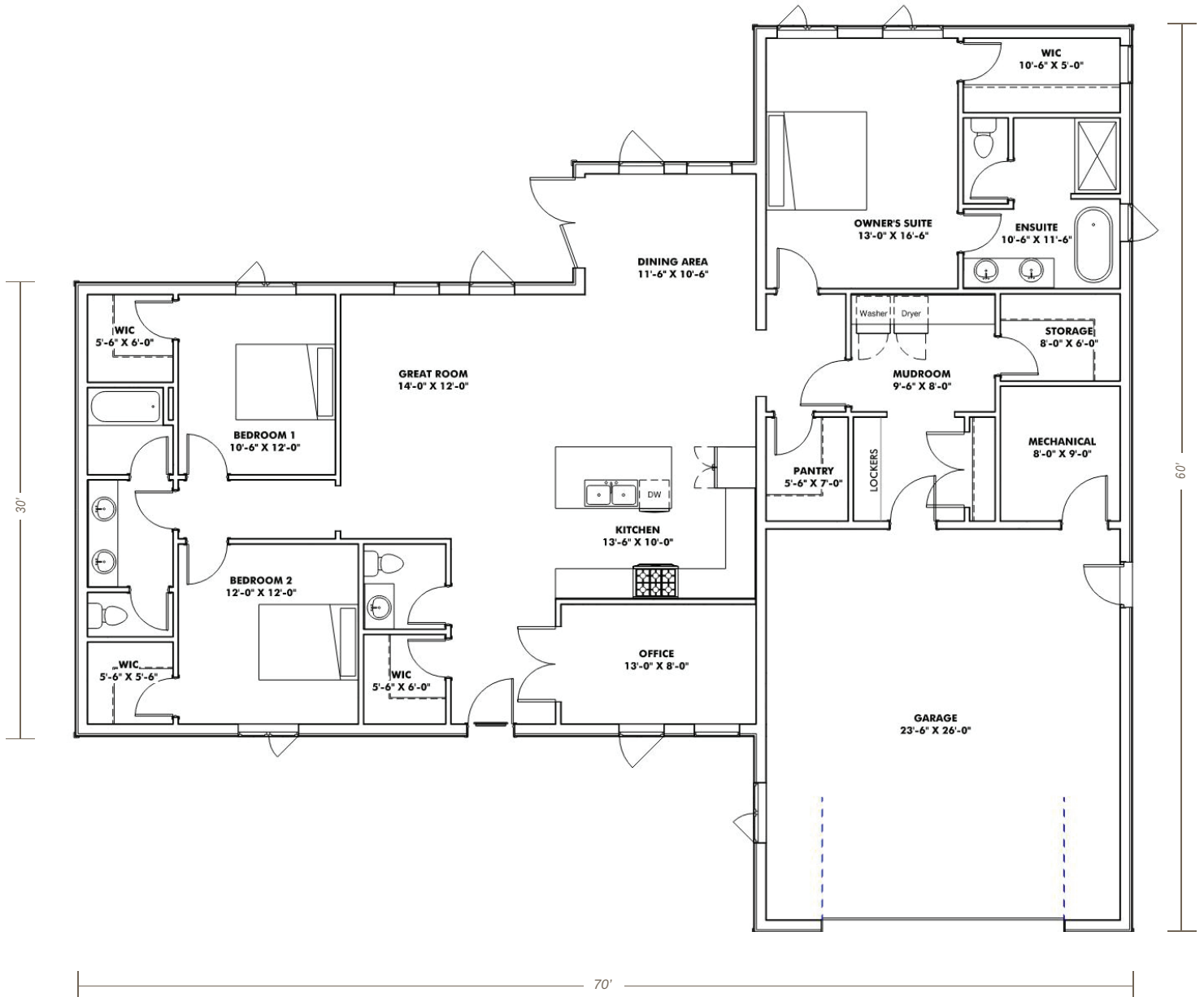
V132024

YOUR HOME. WHEN AND WHERE YOU WANT.

866-974-7678 | sales@integritybuilt.com | integritybuilt.com

The HIGHWOOD

MAIN FLOOR 2118 sq ft



BASE SPECIFICATIONS

■ DESIGN AND ENGINEERING

- Engineered, stamped drawings
- Complete floor plan layouts

■ FOUNDATION

- 5' Perma-Column® with 4 ply 2x8 laminated posts
- Frost Shield Insulation

■ WINDOWS AND DOORS

- White, Vinyl, Dual Glaze, Low E Casement windows
- 36" steel door slabs
 - ½ Glass at front entry
 - Full Glass at dining room
 - 16' x 8' Overhead doors, white, no operator (if applicable).
- *As per standard plan designs shown

■ EXTERIOR WALLS

- 4 ply 2x8 Laminated posts
- 2x4 horizontal strapping (exterior of post)
- House wrap
- 29 Gauge coloured Metal

■ ROOF

- Engineered roof trusses
- 2x6 strapping
- 7 /16" OSB sheathing
- 29 gauge coloured Metal with synthetic underlay

■ WARRANTY

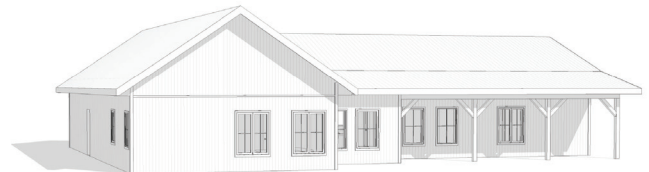
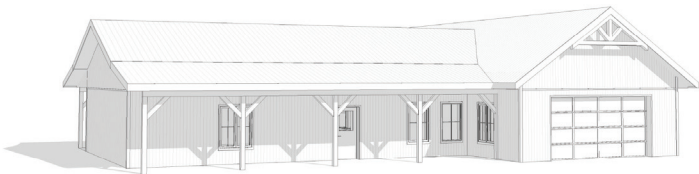
Coverage on labour and materials as follows:

- 1 year: Overhead doors and windows
- 5 years: Defects on supplied material and labour
- 40 years: Metal Finish
- Lifetime: Perma Column Foundation

AVAILABLE UPGRADES

- 7/16" OSB Wall Sheathing
- Board and Batten or Horizontal Plank wall metal profiles

- Wainscot metal accent
- Triple Glaze Windows
- Black Windows



YOUR HOME. WHEN AND WHERE YOU WANT.



866-974-7678 | sales@integritybuilt.com | www.integritybuilt.com