

The FARM HOUSE



SLAB-ON-GRADE, BUILT TO LOCK-UP BY INTEGRITY

Inspired by the traditional farmhouse, this 2-story model features clean lines, an abundance of windows plus a wrap-around porch, allowing it to stand out beautifully against the rural landscape. With over 2900 sq ft of living space, this home provides the canvas for the floor plan of your dreams for family and friends to enjoy.

Built with our Perma-Column® Foundation, this slab-on-grade house is professionally designed and engineered. Integrity crews will build your home to the lock-up stage which includes exterior walls, roof, windows, doors and metal siding, plus a wrap-around lean-to. The interior is ready for you and your contractor to take over and complete.

The Farm House comes with a complete drawing package, including the floor plan for permit application.

FEATURES

- 2-car garage
- 2952 sq ft of living space over 2 floors
- Space for 3 bedrooms, 3 and a half bathrooms, kitchen and dining area, great room, upper floor bonus room, home office, an oversized mud room and laundry
- Option for a wrap-around lean-to with fir timber posts and beam
- Permit ready engineered and stamped drawings
- Warranty covering labour and materials
- Efficient build schedule of 4 - 6 weeks*
- Flexibility - complete the interior your way

*schedule may vary



Upgraded model shown



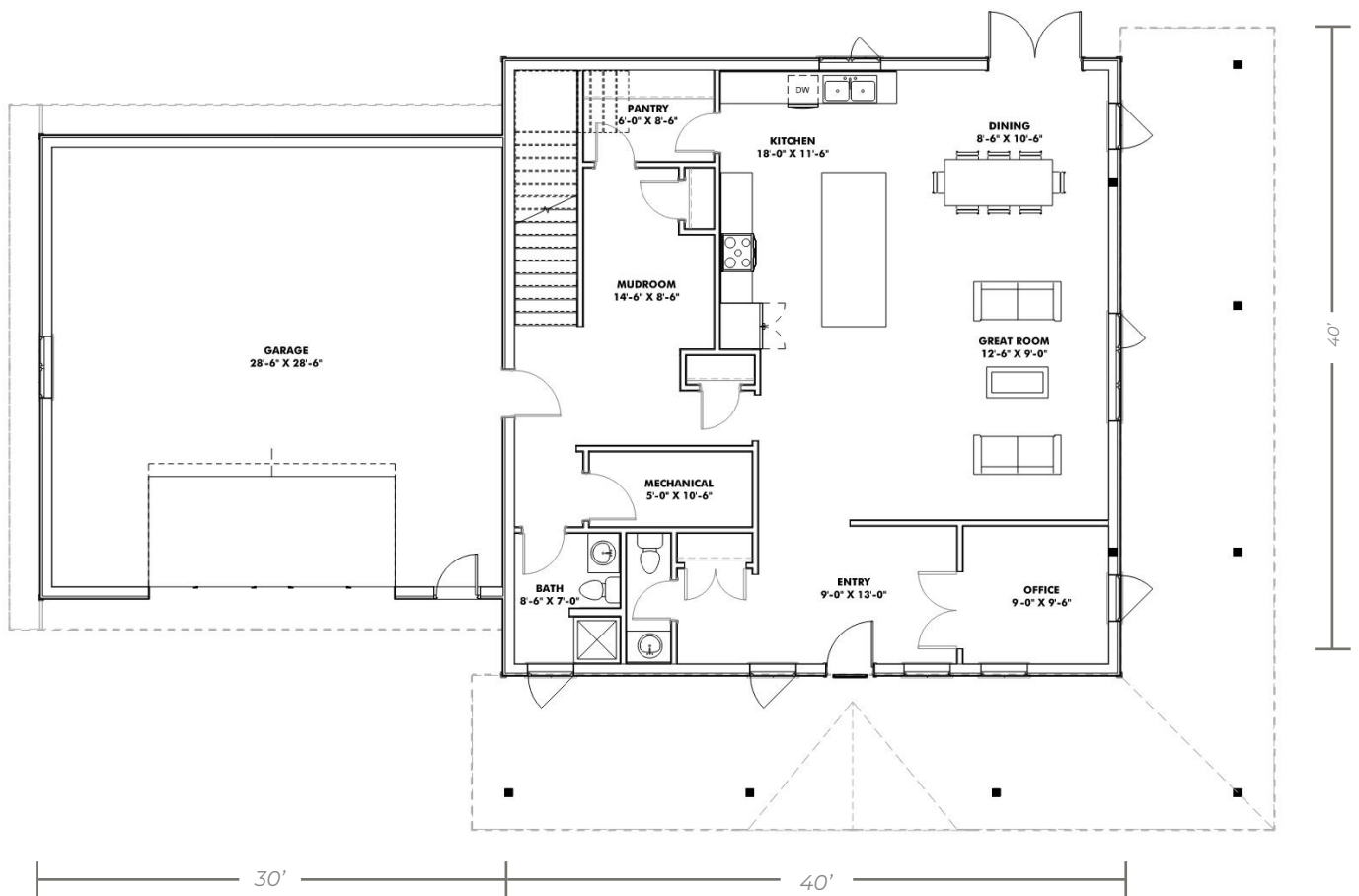
V02142024

YOUR HOME. WHEN AND WHERE YOU WANT.

866-974-7678 | sales@integritybuilt.com | integritybuilt.com

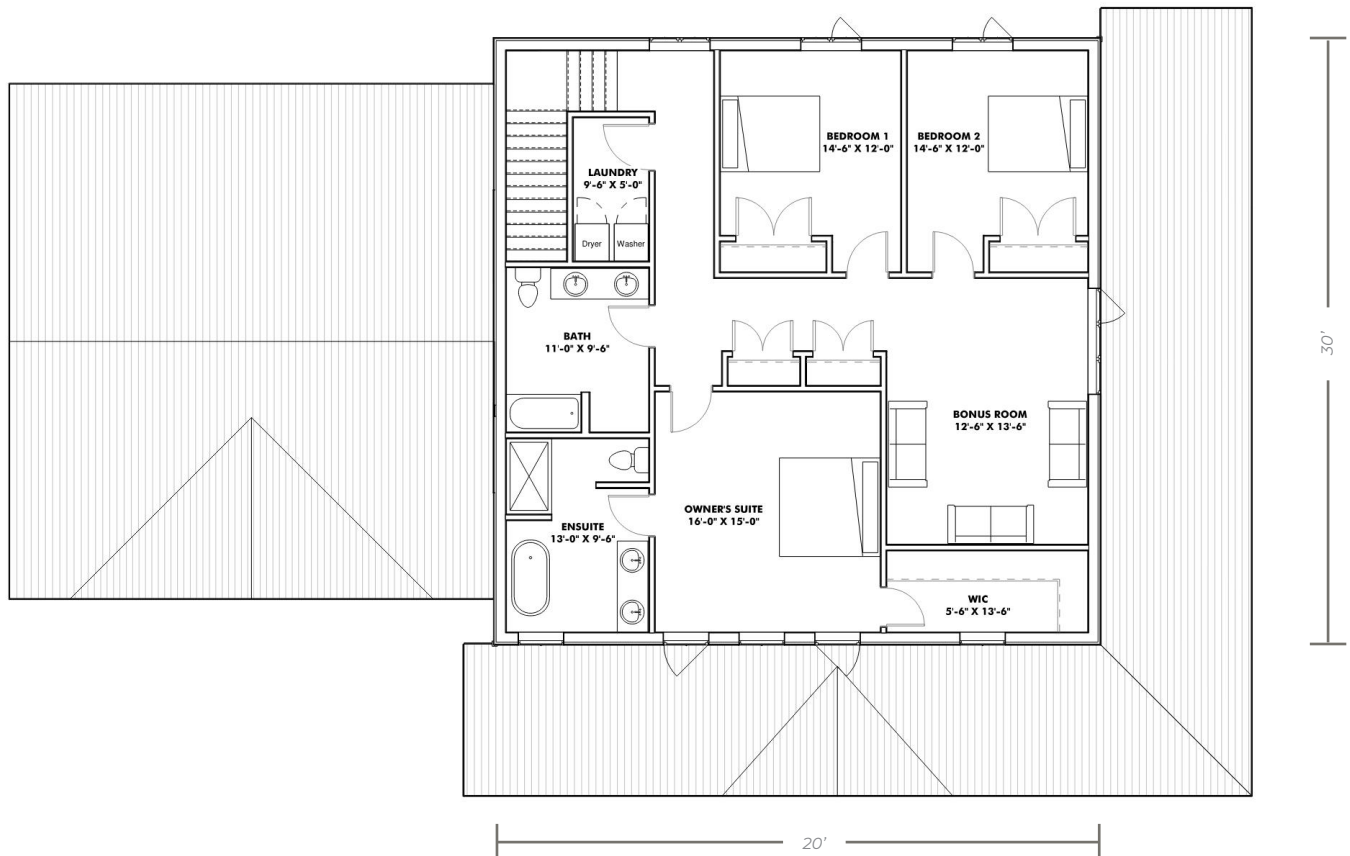
The FARM HOUSE

MAIN FLOOR 1476 sq ft



The FARM HOUSE

SECOND FLOOR 1476 SQ FT



BASE SPECIFICATIONS

■ DESIGN AND ENGINEERING

- Engineered, stamped drawings
- Complete floor plan layouts

■ FOUNDATION

- 5' Perma-Column® with 4 ply 2x8 laminated posts
- Frost Shield Insulation System

■ WINDOWS AND DOORS

- White, Vinyl, Dual Glaze, Low E Casement windows
 - 36" steel door slabs
 - ½ Glass at front entry
 - Full Glass at dining room
 - 16' x 8' Overhead doors, white, no operator (if applicable).
- *As per standard plan designs shown

■ EXTERIOR WALLS

- 4 ply 2x8 Laminated posts
- 2x4 horizontal strapping (exterior of post)
- House wrap
- 29 Gauge coloured Metal

■ ROOF

- Engineered roof trusses
- 2x6 strapping
- 7/16" OSB sheathing
- 29 gauge coloured Metal with synthetic underlay

■ WARRANTY

- Coverage on labour and materials as follows;
- 1 year: Overhead doors and windows
 - 5 years: Defects on supplied material and labour
 - 40 years: Metal Finish
 - Lifetime: Perma-Column® Foundation

AVAILABLE UPGRADES

- 7/16" OSB Wall Sheathing
- Board and Batten or Horizontal Plank wall metal profiles

- Wainscot metal accent
- Triple Glaze Windows
- Black Windows



YOUR HOME. WHEN AND WHERE YOU WANT.



866-974-7678 | sales@integritybuilt.com | www.integritybuilt.com