

# The SHOUSE

SHOP HOUSE



## SLAB-ON-GRADE, BUILT TO LOCK-UP BY INTEGRITY

The Shouse makes outstanding use of its space, including a 48'x70' shop that features 3 overhead doors to easily fit your vehicles, toys and tools. The attached residence is 2 floors offering 2660 sq ft of functional space with room for 4 bedrooms, 2 and a half bathrooms, lower kitchen and dining area, great room, upper floor bonus room, laundry and storage.

Built with our Perma-Column® Foundation, this slab-on-grade house is professionally designed and engineered. Integrity crews will build your home to the lock-up stage which includes exterior walls, roof, windows, doors and metal siding, plus options such as a wrap-around lean-to and timber accents. The interior is prepared and ready for you and your contractor to take over and complete.

The Shouse comes with a complete drawing package, including the floor plan for permit application.

## FEATURES

- 48'x70' garage and workshop
- 2660 sq ft of living space over 2 floors
- Space for 4 bedrooms, 2 and a half bathrooms, kitchen and dining area, great room, upper floor bonus room, laundry and storage
- Options to add wrap-around lean-to and timber accents
- Permit ready engineered and stamped drawings
- Warranty covering labour and materials
- Efficient build schedule of 4 - 6 weeks\*
- Flexibility - complete the interior your way

\*schedule may vary



Upgraded model shown

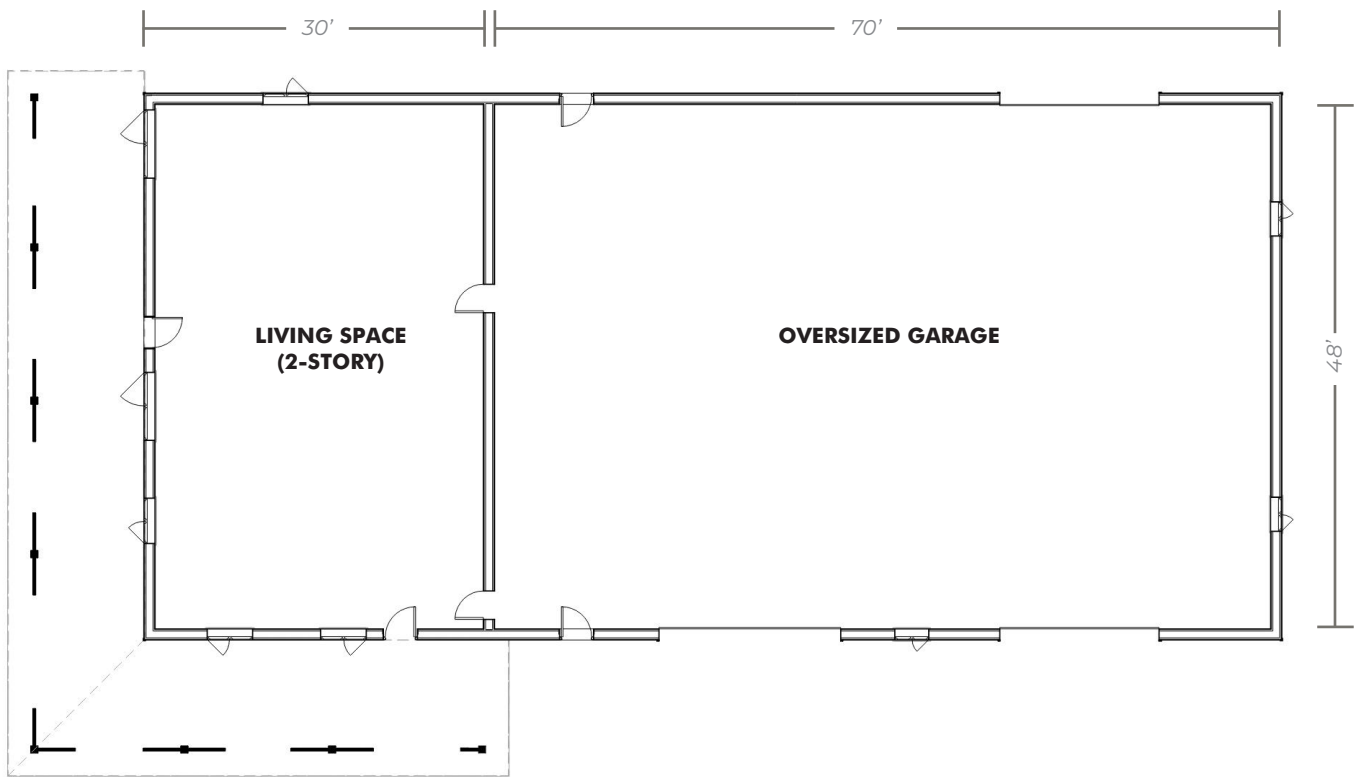


V01262024

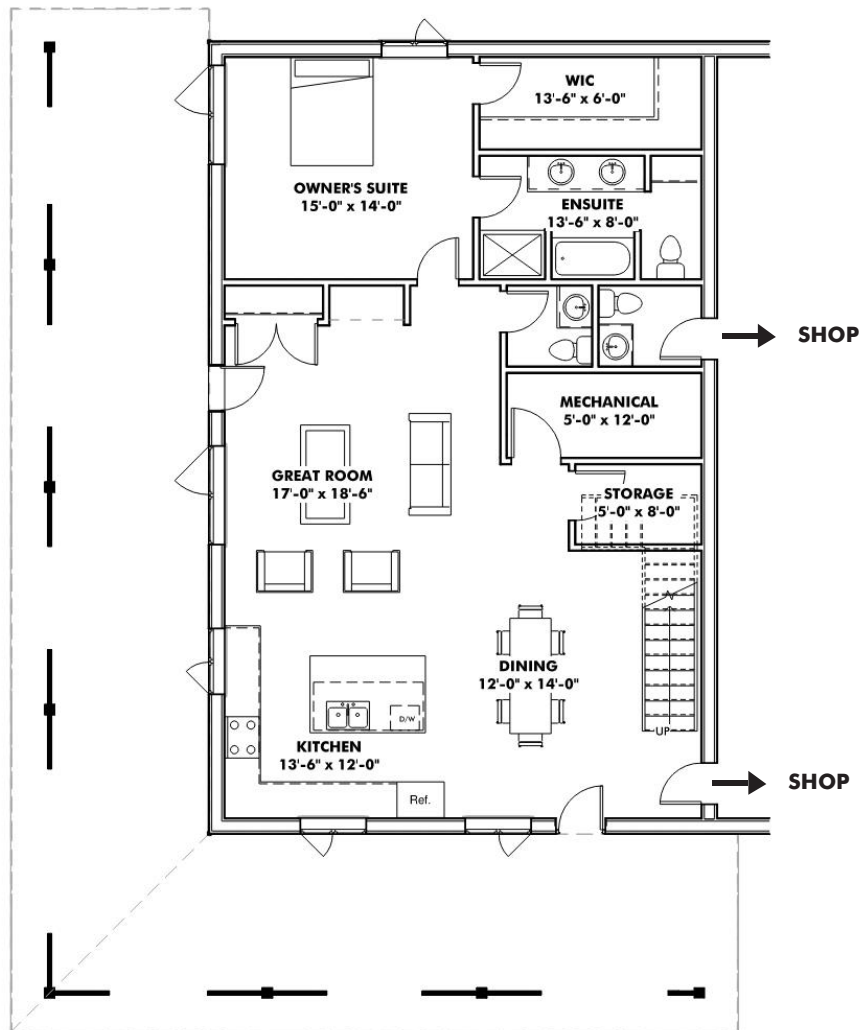
**YOUR HOME. WHEN AND WHERE YOU WANT.**

866-974-7678 | [sales@integritybuilt.com](mailto:sales@integritybuilt.com) | [integritybuilt.com](http://integritybuilt.com)

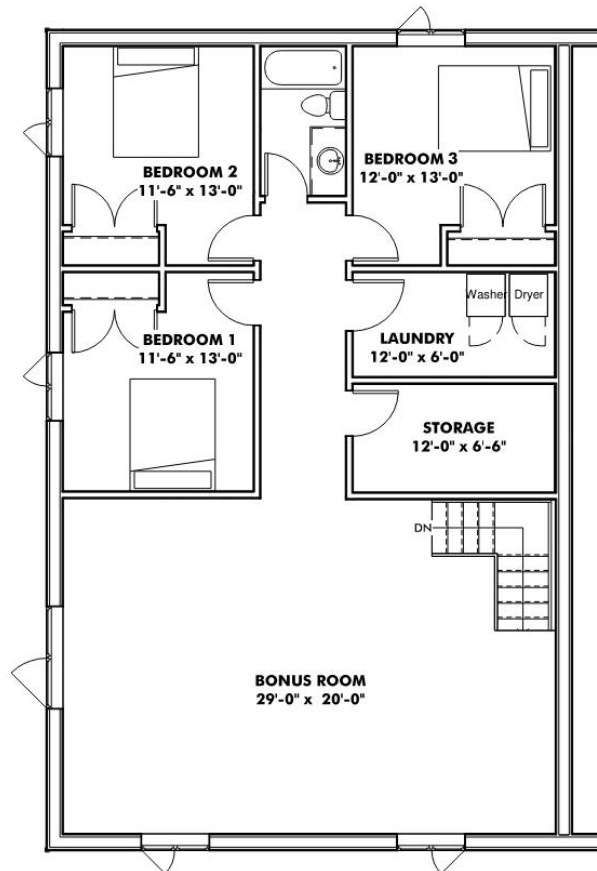
## LAYOUT



## MAIN FLOOR 1330 sq ft



## SECOND FLOOR 1330 SQ FT



## BASE SPECIFICATIONS

### ■ DESIGN AND ENGINEERING

- Engineered, stamped drawings
- Complete floor plan layouts

### ■ FOUNDATION

- 5' Perma-Column® with 4 ply 2x8 laminated posts
- Frost Shield Insulation System

### ■ WINDOWS AND DOORS

- White, Vinyl, Dual Glaze, Low E Casement windows
- 36" steel door slabs
  - ½ Glass at front entry
  - Full Glass at dining room
  - 16' x 8' Overhead doors, white, no operator (if applicable).
- \*As per standard plan designs shown

### ■ EXTERIOR WALLS

- 4 ply 2x8 Laminated posts
- 2x4 horizontal strapping (exterior of post)
- House wrap
- 29 Gauge coloured Metal

### ■ ROOF

- Engineered roof trusses
- 2x6 strapping
- 7/16" OSB sheathing
- 29 gauge coloured Metal with synthetic underlay

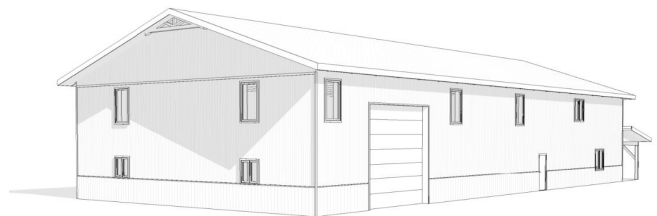
### ■ WARRANTY

- Coverage on labour and materials as follows;
- 1 year: Overhead doors and windows
  - 5 years: Defects on supplied material and labour
  - 40 years: Metal Finish
  - Lifetime: Perma-Column® Foundation

## AVAILABLE UPGRADES

- 7/16" OSB Wall Sheathing
- Board and Batten or Horizontal Plank wall metal profiles

- Wainscot metal accent
- Triple Glaze Windows
- Black Windows



**YOUR HOME. WHEN AND WHERE YOU WANT.**



866-974-7678 | [sales@integritybuilt.com](mailto:sales@integritybuilt.com) | [www.integritybuilt.com](http://www.integritybuilt.com)