

The PRAIRIE PEAK



SLAB-ON-GRADE, BUILT TO LOCK-UP BY INTEGRITY

The Prairie Peak with its modern single-slope roof design is a family home built for visual impact and practicality. Well thought out at 1570 sq ft, this home has all the necessities in a smart layout. The 32' x 35' garage leads to the organized mudroom with quick access to the kitchen featuring an enviable island and large pantry. Open to the Great room with soaring sloped ceilings and right off of the formal front entry, this bright space with double-stacked windows is designed to impress! With 2 and ½ baths, 2 bedrooms and the Owner's suite featuring the same sloped ceiling and windows, this home feels like a retreat.

Built with our Perma-Column® Foundation, this slab-on-grade house is professionally designed and engineered. Integrity crews will build your home to the lock-up stage which includes exterior walls, roof, windows, doors and metal siding, plus a wrap-around lean-to. The interior is ready for you and your contractor to take over and complete.

The Prairie Peak comes with a complete drawing package, including the floor plan for permit application.

FEATURES

- 3 bedroom, 2 ½ bath bungalow with 1570 sq ft of customizable living space
- 1025 sq ft of Garage Space 32' x 35'. 9' rear wall height, 14' front wall height
- Permit ready engineered and stamped drawings
- Warranty covering labour and materials
- Efficient build schedule of 4 - 6 weeks*
- Flexibility - complete the interior your way

*schedule may vary



Upgraded model shown



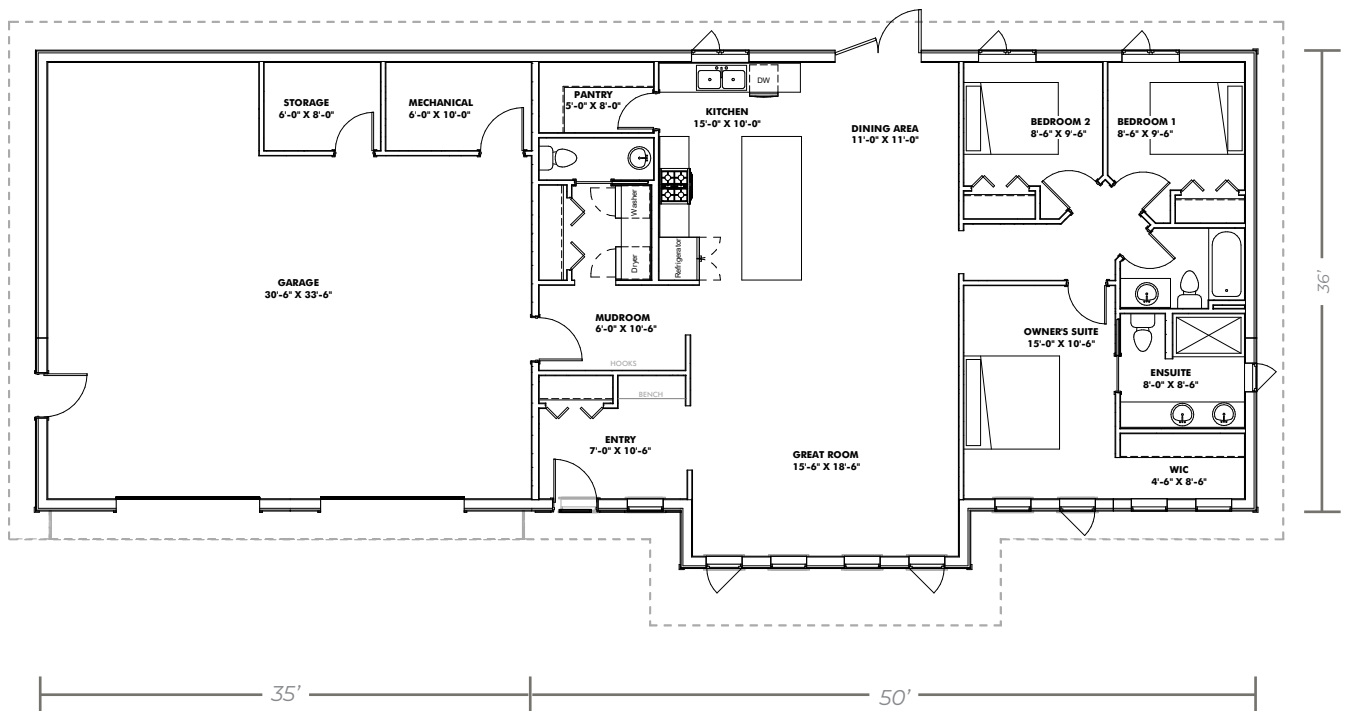
V10082024

YOUR HOME. WHEN AND WHERE YOU WANT.

1-866-974-7678 | sales@integritybuilt.com | integritybuilt.com

The
PRAIRIE PEAK

MAIN FLOOR 1570 sq ft



BASE SPECIFICATIONS

■ DESIGN AND ENGINEERING

- Engineered, stamped drawings
- Complete floor plan layouts

■ FOUNDATION

- 5' Perma-Column® with 4 ply 2x8 laminated posts
- Frost Shield Insulation System

■ WINDOWS AND DOORS

- White, Vinyl, Dual Glaze, Low E Casement windows
 - 36" steel door slabs
 - ½ Glass at front entry
 - Full Glass at dining room
 - 16' x 8' Overhead doors, white, no operator (if applicable).
- *As per standard plan designs shown

■ EXTERIOR WALLS

- 4 ply 2x8 Laminated posts
- 2x4 horizontal strapping (exterior of post)
- House wrap
- 29 Gauge coloured Metal

■ ROOF

- Engineered roof trusses
- 2x6 strapping
- 7/16" OSB sheathing
- 29 gauge coloured Metal with synthetic underlay

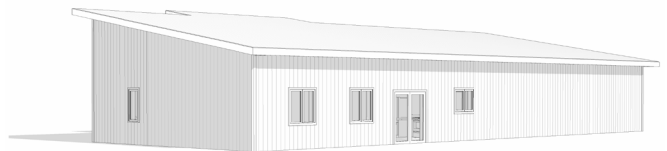
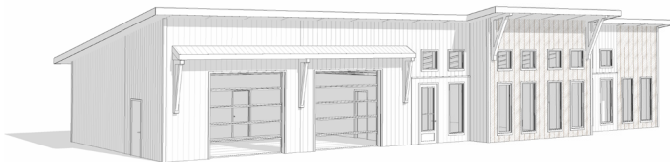
■ WARRANTY

- Coverage on labour and materials as follows;
- 1 year: Overhead doors and windows
 - 5 years: Defects on supplied material and labour
 - 40 years: Metal Finish
 - Lifetime: Perma-Column® Foundation

AVAILABLE UPGRADES

- 7/16" OSB Wall Sheathing
- Board and Batten or Horizontal Plank wall metal profiles

- Wainscot metal accent
- Triple Glaze Windows
- Black Windows



YOUR HOME. WHEN AND WHERE YOU WANT.



1-866-974-7678 | sales@integritybuilt.com | www.integritybuilt.com