

The BUNK HOUSE



SLAB-ON-GRADE, BUILT TO LOCK-UP BY INTEGRITY

This 32'x65' bungalow is inspired by utility to provide 1900 square feet of living space. The Bunk House has room for 3 bedrooms, 2 bathrooms, great room, kitchen and dining area, plus laundry and storage.

Built with our Perma-Column® Foundation, this slab-on-grade house is professionally designed and engineered. Integrity crews will build your home to the lock-up stage which includes exterior walls, roof, windows, doors and metal siding. The interior is ready for you and your contractor to take over and complete.

The Bunk House comes with a complete drawing package, including the floor plan for permit application.

FEATURES

- 1905 sq ft of living space
- Space for 3 bedrooms, 2 bathrooms, kitchen and dining area, great room, laundry and storage
- Permit ready engineered and stamped drawings
- Warranty covering labour and materials
- Efficient build schedule of 4 - 6 weeks*
- Flexibility - complete the interior your way

*schedule may vary



Upgraded model shown



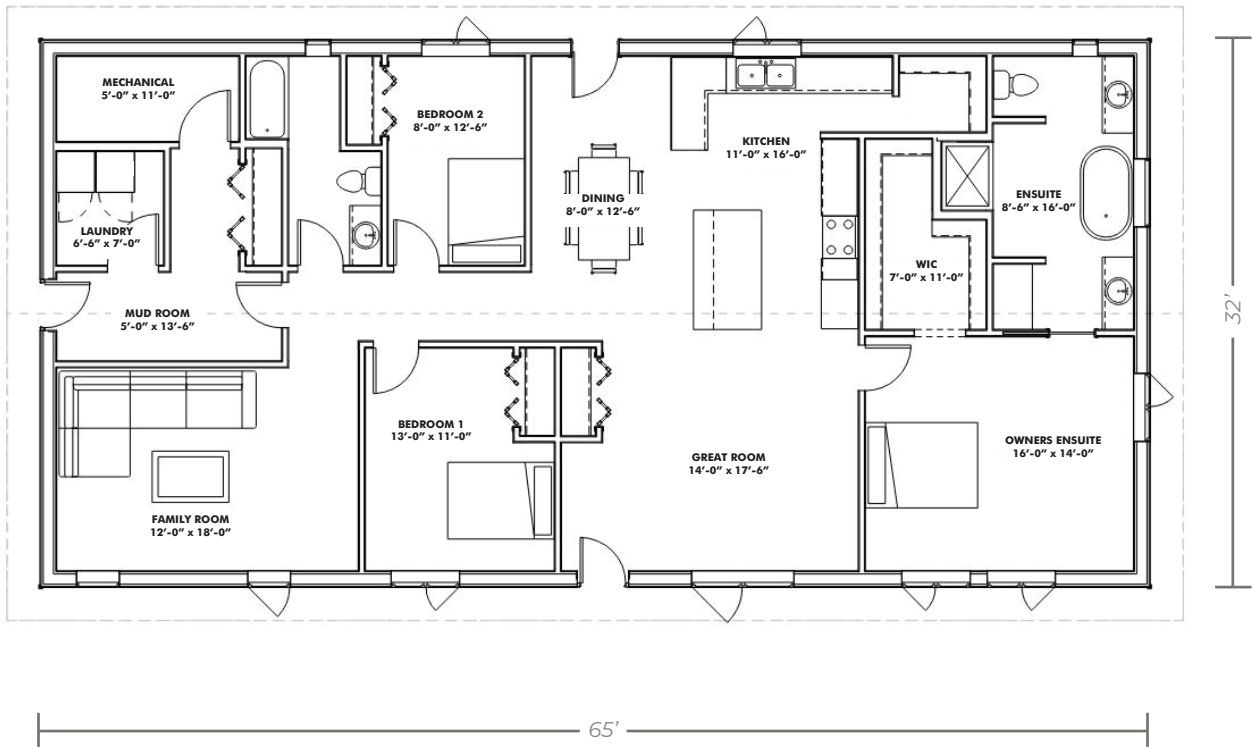
V6262025

YOUR HOME. WHEN AND WHERE YOU WANT.

1-866-974-7678 | sales@integritybuilt.com | integritybuilt.com

The BUNK HOUSE

MAIN FLOOR 1905 sq ft



BASE SPECIFICATIONS

■ DESIGN AND ENGINEERING

- Engineered, stamped drawings
- Complete floor plan layouts

■ FOUNDATION

- Perma-Column® with 2x8 laminated posts
- Frost Shield Insulation System

■ WINDOWS AND DOORS

- White, Vinyl, Dual Glaze, Low E Casement windows
 - 36" steel door slabs
 - ½ Glass at front entry
 - Full Glass at dining room
- *As per standard plan designs shown

■ EXTERIOR WALLS

- 2x8 Laminated posts
- 2x4 horizontal strapping (exterior of post)
- House wrap
- 29 Gauge coloured Metal

■ ROOF

- Engineered roof trusses
- 2x6 strapping
- 7/16" OSB sheathing
- 29 gauge coloured Metal with synthetic underlay

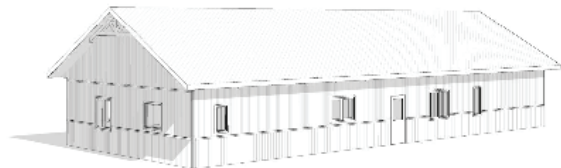
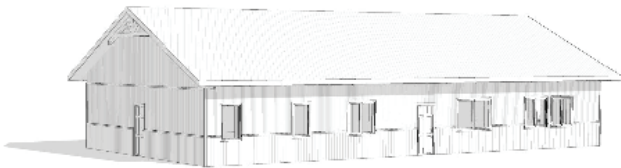
■ WARRANTY

- Coverage on labour and materials as follows;
- 5 years: Defects on supplied material and labour
 - 40 years: Metal Finish
 - Lifetime: Perma-Column® Foundation

AVAILABLE UPGRADES

- 7/16" OSB Wall Sheathing
- Board and Batten or Horizontal Plank wall metal profiles

- Wainscot metal accent
- Triple Glaze Windows
- Black Windows



YOUR HOME. WHEN AND WHERE YOU WANT.



1-866-974-7678 | sales@integritybuilt.com | www.integritybuilt.com