

The HOMESTEAD



SLAB-ON-GRADE, BUILT TO LOCK-UP BY INTEGRITY

The Homestead is a bungalow that provides room for you and your family. With more than 2700 square feet of living space, there is room for a large owner's suite with walk-in closet and ensuite, 3 bedrooms, 2 bathrooms, home office, large kitchen with walk-in pantry and dining area, great room, laundry and mudroom. The model also includes a 2-car garage and a covered front porch.

Built with our Perma-Column® Foundation, this slab-on-grade house is professionally designed and engineered. Integrity crews will build your home to the lock-up stage which includes exterior walls, windows, doors, and metal roofing. The interior is ready for you and your contractor to take over and complete.

The Homestead also comes with a complete drawing package, including the floor plan for permit application.

FEATURES

- 2786 sq ft of living space plus a covered front porch and a 2-car garage
- Space for owner's suite with walk-in closet and ensuite, 3 bedrooms, 2 bathrooms, home office, large kitchen with walk-in pantry and dining area, great room, laundry, and mudroom
- Option to add awnings on front windows
- Permit ready engineered and stamped drawings
- Warranty covering labour and materials
- Efficient build schedule of 4 - 6 weeks*
- Flexibility - complete the interior your way

*schedule may vary



Upgraded model shown



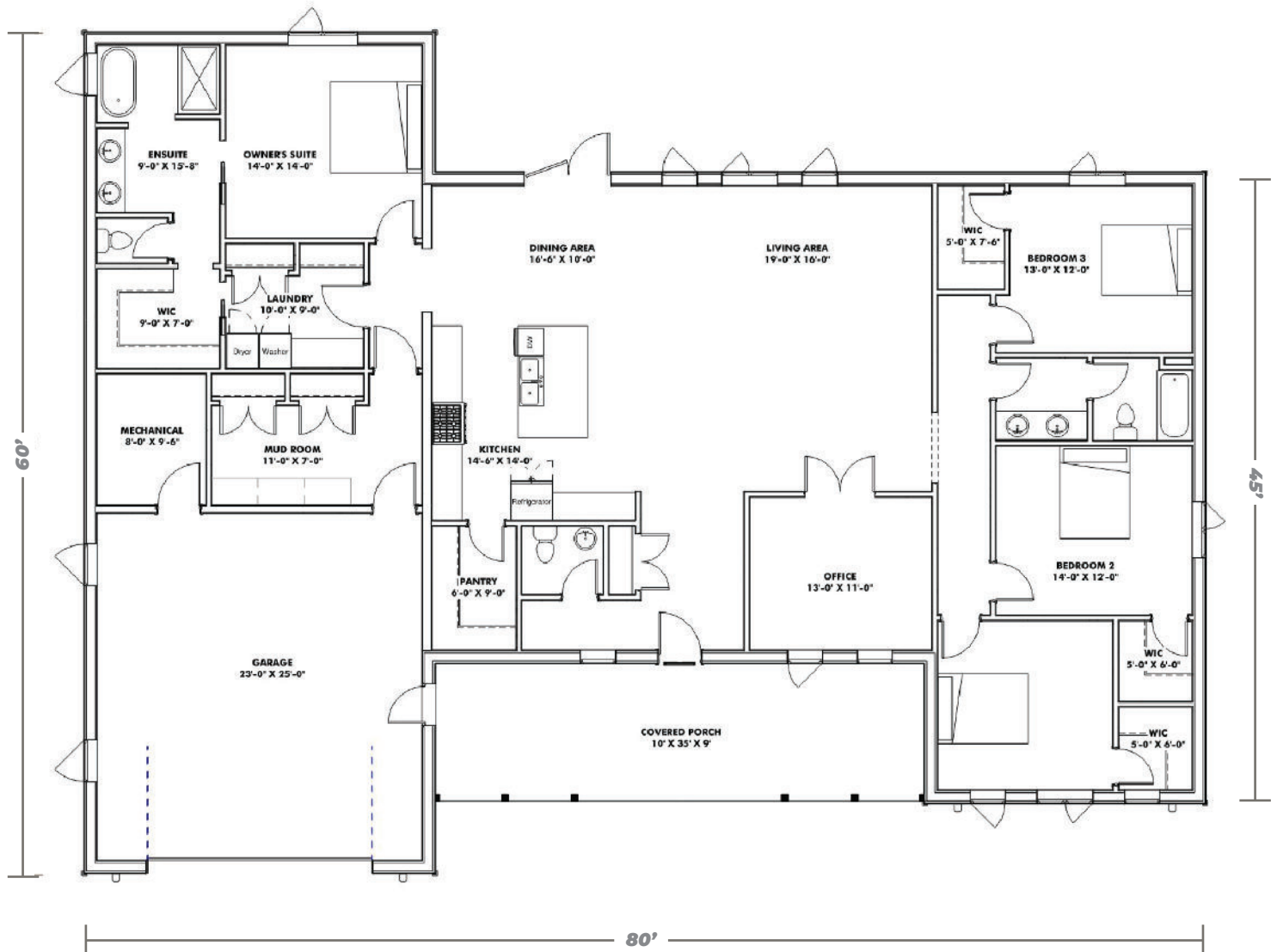
V6262025

YOUR HOME. WHEN AND WHERE YOU WANT.

1-866-974-7678 | sales@integritybuilt.com | integritybuilt.com

The HOMESTEAD

MAIN FLOOR 2786 sq ft



1-866-974-7678 | sales@integritybuilt.com | www.integritybuilt.com

BASE SPECIFICATIONS

■ DESIGN AND ENGINEERING

- Engineered, stamped drawings
- Complete floor plan layouts

■ FOUNDATION

- Perma-Column® with 2x8 laminated posts
- Frost Shield Insulation System

■ WINDOWS AND DOORS

- White, Vinyl, Dual Glaze, Low E Casement windows
 - 36" steel door slabs
 - ½ Glass at front entry
 - Full Glass at dining room
 - 16' x 8' Overhead doors, white, no operator (if applicable).
- *As per standard plan designs shown

■ EXTERIOR WALLS

- 2x8 Laminated posts
- 2x4 horizontal strapping (exterior of post)
- House wrap
- 29 Gauge coloured Metal

■ ROOF

- Engineered roof trusses
- 2x6 strapping
- 7/16" OSB sheathing
- 29 gauge coloured Metal with synthetic underlay

■ WARRANTY

- Coverage on labour and materials as follows;
- 1 year: Overhead doors and windows
 - 5 years: Defects on supplied material and labour
 - 40 years: Metal Finish
 - Lifetime: Perma-Column® Foundation

AVAILABLE UPGRADES

- 7/16" OSB Wall Sheathing
- Board and Batten or Horizontal Plank wall metal profiles

- Wainscot metal accent
- Triple Glaze Windows
- Black Windows



YOUR HOME. WHEN AND WHERE YOU WANT.



1-866-974-7678 | sales@integritybuilt.com | www.integritybuilt.com