

# The RANCH HAND



## SLAB-ON-GRADE, BUILT TO LOCK-UP BY INTEGRITY

This attractive 32'x65' bungalow is inspired by simplicity and functionality with approximately 1900 square feet of living space. The Ranch Hand has room for 3 bedrooms, 2 bathrooms, great room, kitchen and dining area, plus laundry, storage, and separate family room space. This model includes a covered porch on both the front and rear of home.

Built with our Perma-Column® Foundation, this slab-on-grade house is professionally designed and engineered. Integrity crews will build your home to the lock-up stage which includes exterior walls, roof, windows, doors and metal siding. The interior is ready for you and your contractor to take over and complete.

The Ranch Hand also comes with a complete drawing package, including the floor plan for permit application.

## FEATURES

- 1905 sq ft of living space plus full-length covered porches on front and rear
- Space for 3 bedrooms, 2 bathrooms, kitchen and dining area, great room, laundry and storage
- Permit ready engineered and stamped drawings
- Warranty covering labour and materials
- Efficient build schedule of 4 - 6 weeks\*
- Flexibility - complete the interior your way

\*schedule may vary



Upgraded model shown



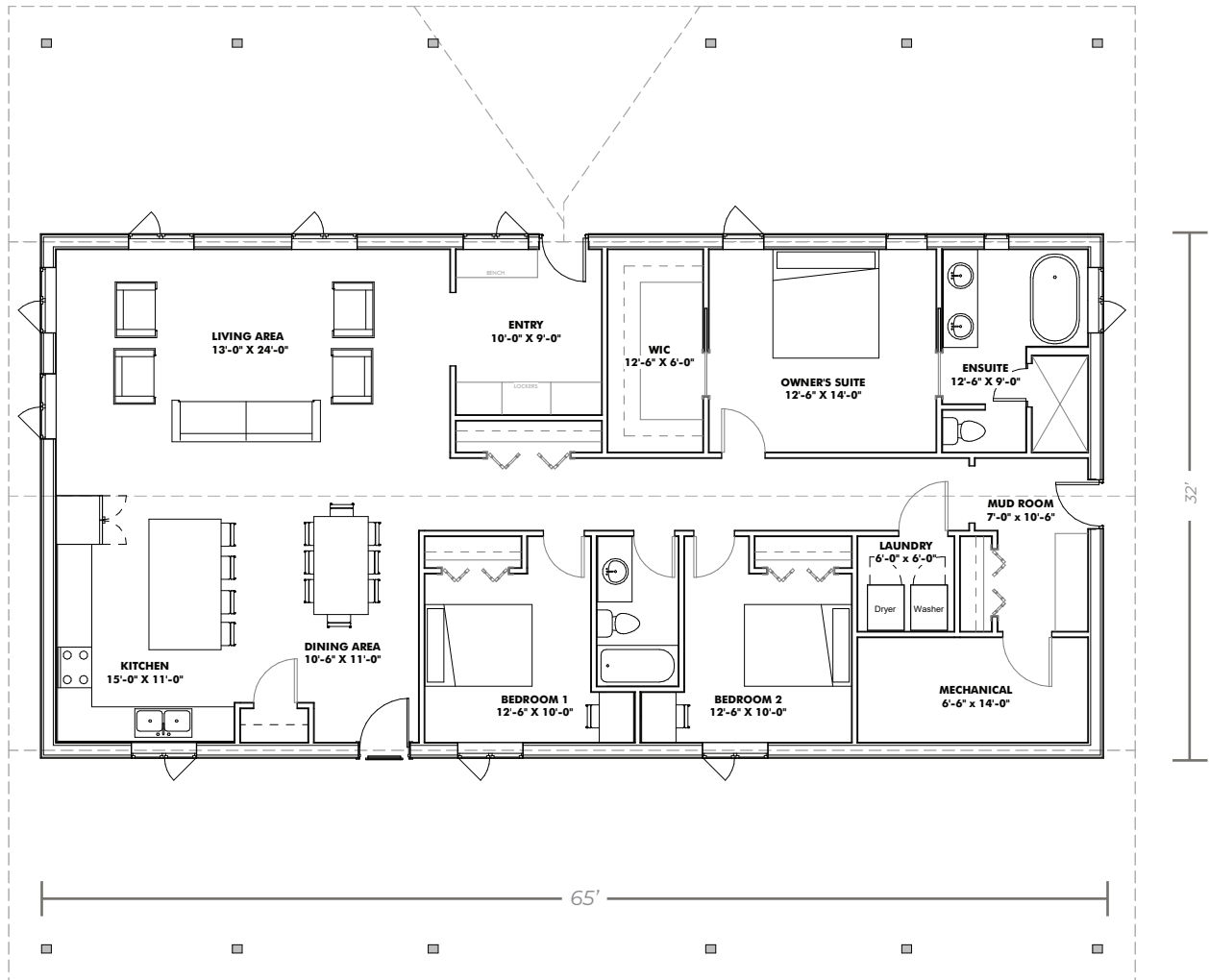
V6262025

**YOUR HOME. WHEN AND WHERE YOU WANT.**

1-866-974-7678 | [sales@integritybuilt.com](mailto:sales@integritybuilt.com) | [integritybuilt.com](http://integritybuilt.com)

# *The* RANCH HAND

**MAIN FLOOR 1905 sq ft**



## BASE SPECIFICATIONS

### ■ DESIGN AND ENGINEERING

- Engineered, stamped drawings
- Complete floor plan layouts

### ■ FOUNDATION

- Perma-Column® with 2x8 laminated posts
- Frost Shield Insulation System

### ■ WINDOWS AND DOORS

- White, Vinyl, Dual Glaze, Low E Casement windows
  - 36" steel door slabs
    - ½ Glass at front entry
    - Full Glass at dining room
- \*As per standard plan designs shown

### ■ EXTERIOR WALLS

- 2x8 Laminated posts
- 2x4 horizontal strapping (exterior of post)
- House wrap
- 29 Gauge coloured Metal

### ■ ROOF

- Engineered roof trusses
- 2x6 strapping
- 7/16" OSB sheathing
- 29 gauge coloured Metal with synthetic underlay

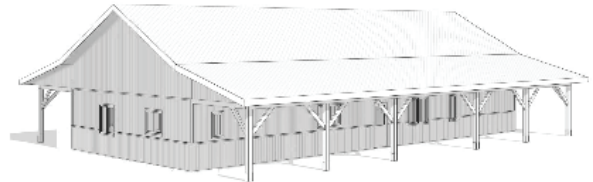
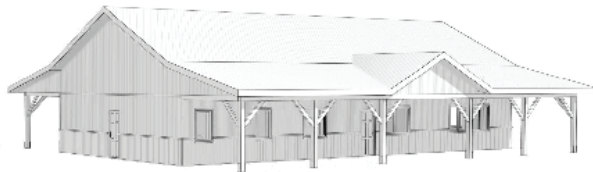
### ■ WARRANTY

- Coverage on labour and materials as follows;
- 5 years: Defects on supplied material and labour
  - 40 years: Metal Finish
  - Lifetime: Perma-Column® Foundation

## AVAILABLE UPGRADES

- 7/16" OSB Wall Sheathing
- Board and Batten or Horizontal Plank wall metal profiles

- Wainscot metal accent
- Triple Glaze Windows
- Black Windows



**YOUR HOME. WHEN AND WHERE YOU WANT.**



1-866-974-7678 | [sales@integritybuilt.com](mailto:sales@integritybuilt.com) | [www.integritybuilt.com](http://www.integritybuilt.com)